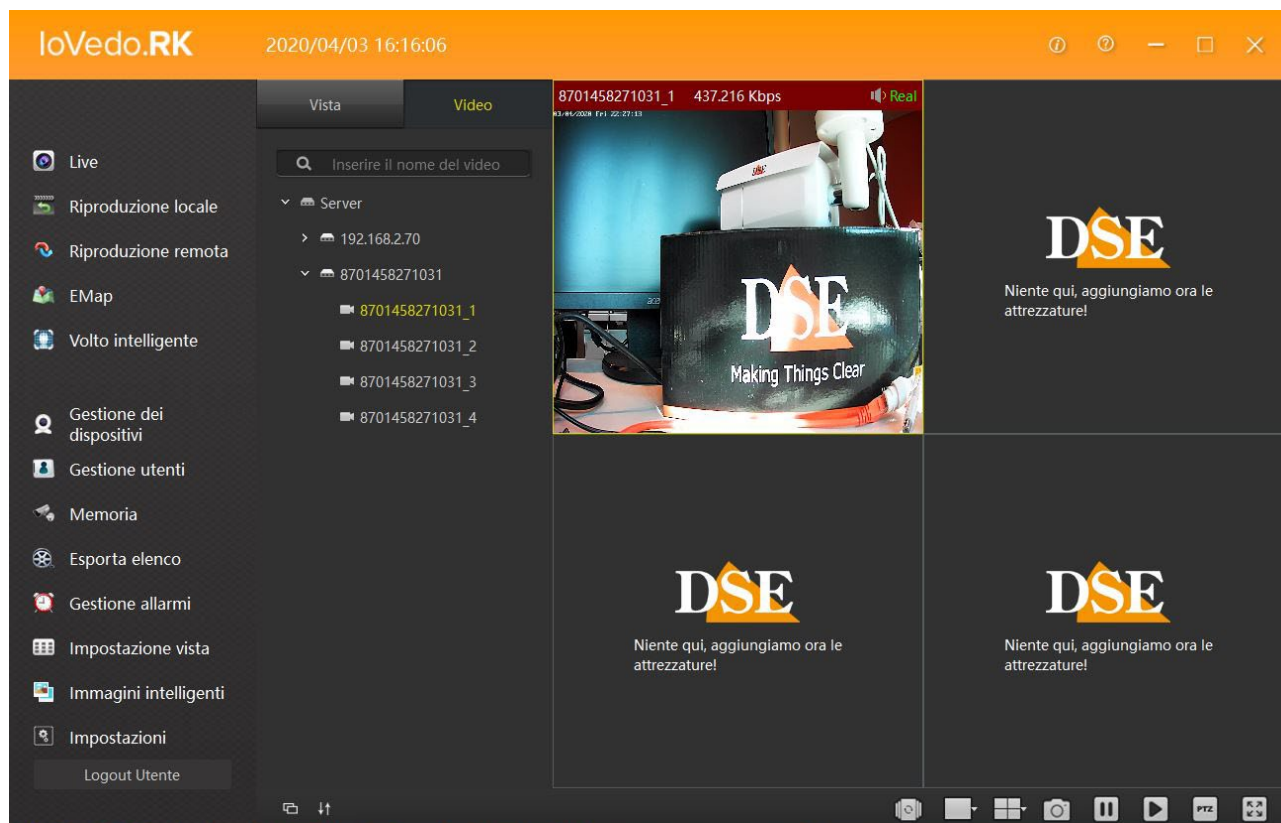


# IoVedo.RK

Software for IP cameras and NVR/DVR RK Series





## Introduction

---

The IoVedo.RK software is a software for Windows that allows you to control all our RK Series cameras and video recorders. You can control both local devices on your network internally, as well as remote devices via the internet using our P2P cloud server. In the local internal network you can also control Onvif cameras of other brands. This is a very powerful and flexible tool that can handle numerous streams incoming videos and manage them with its numerous functions.

## Installing the program

---

The IoVedo.RK software must be installed on a computer connected via a local network or via internet with cameras to manage. It is software for the Windows operating system.

To install the software, double click on the installation icon and follow the wizard.

Once the installation is complete, a new icon will appear on the desktop.



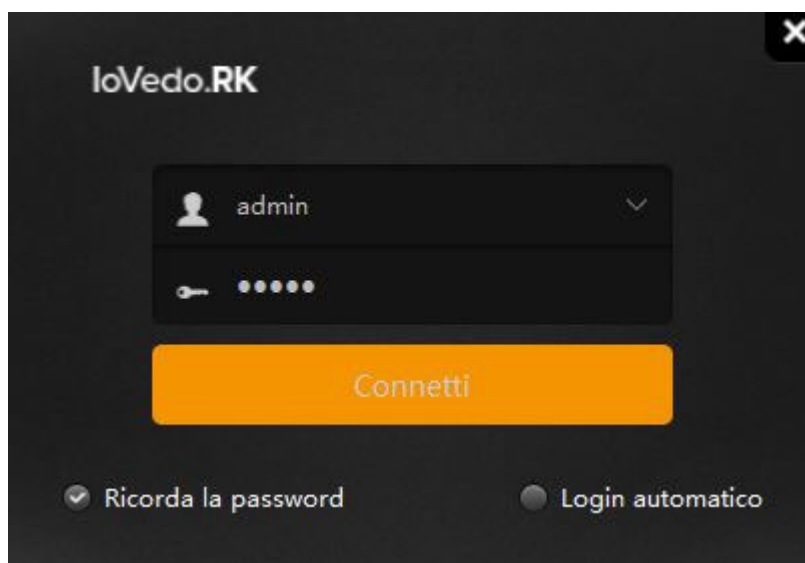
Double click on the icon to start the program.

## Log in

---

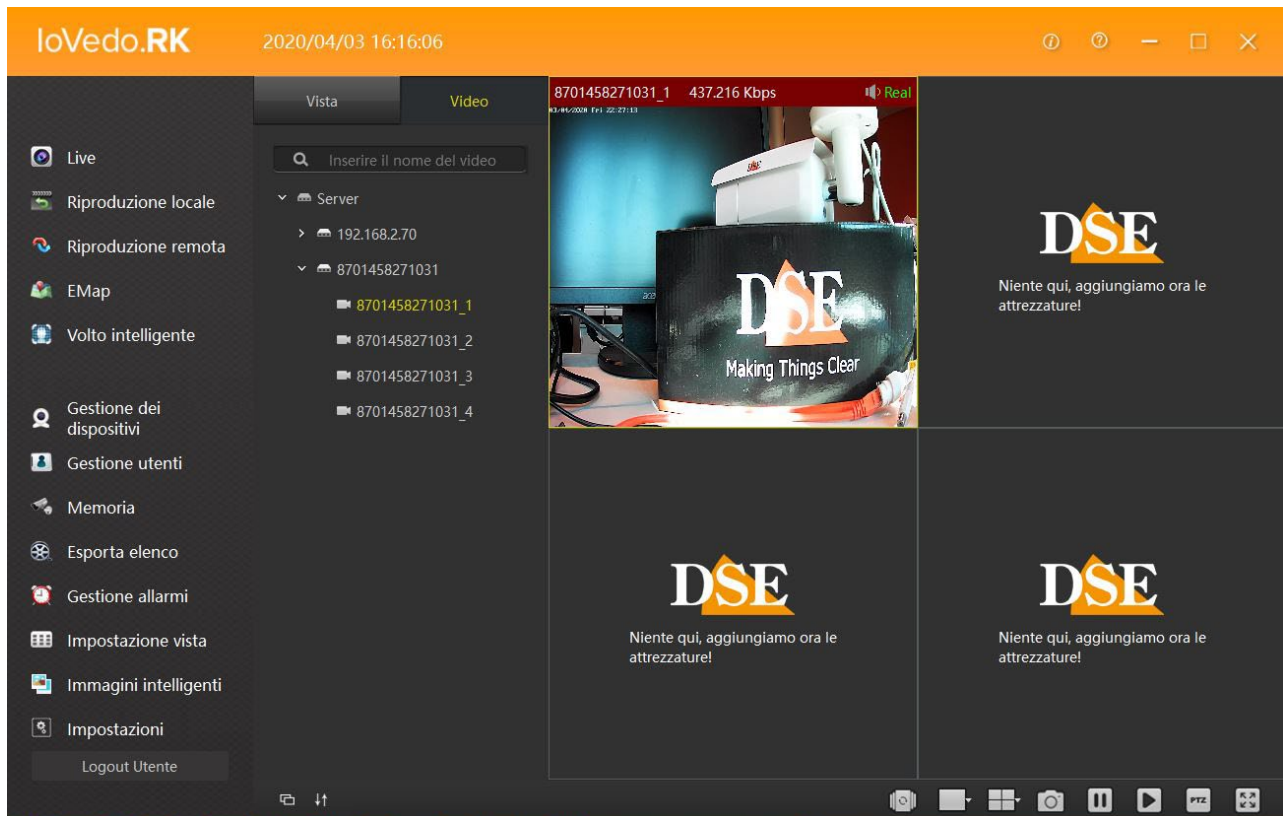
Access to the IoVedo.RK program is password protected.

When you log in for the first time, you choose your user name and password which will then be used to log in log in.



In the Log-in window you can enable REMEMBER PASSWORD to avoid having to type the password at each login and AUTOMATIC LOGIN to skip the log-in window entirely.

## User interface



The user interface of IoVedo.RK is very simple and intuitive. It is made up of three sections which they allow the management and viewing of the installed systems.

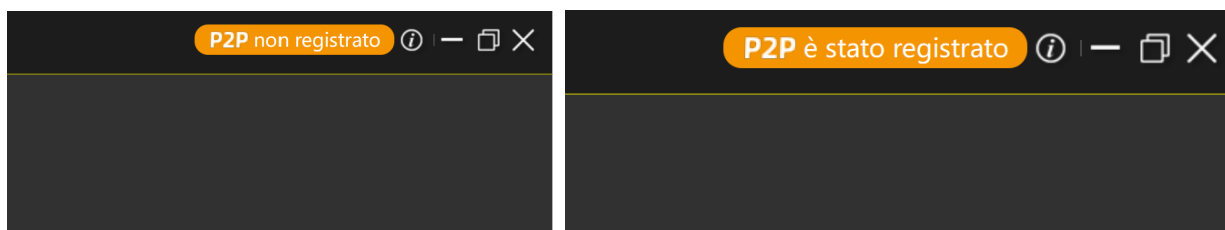
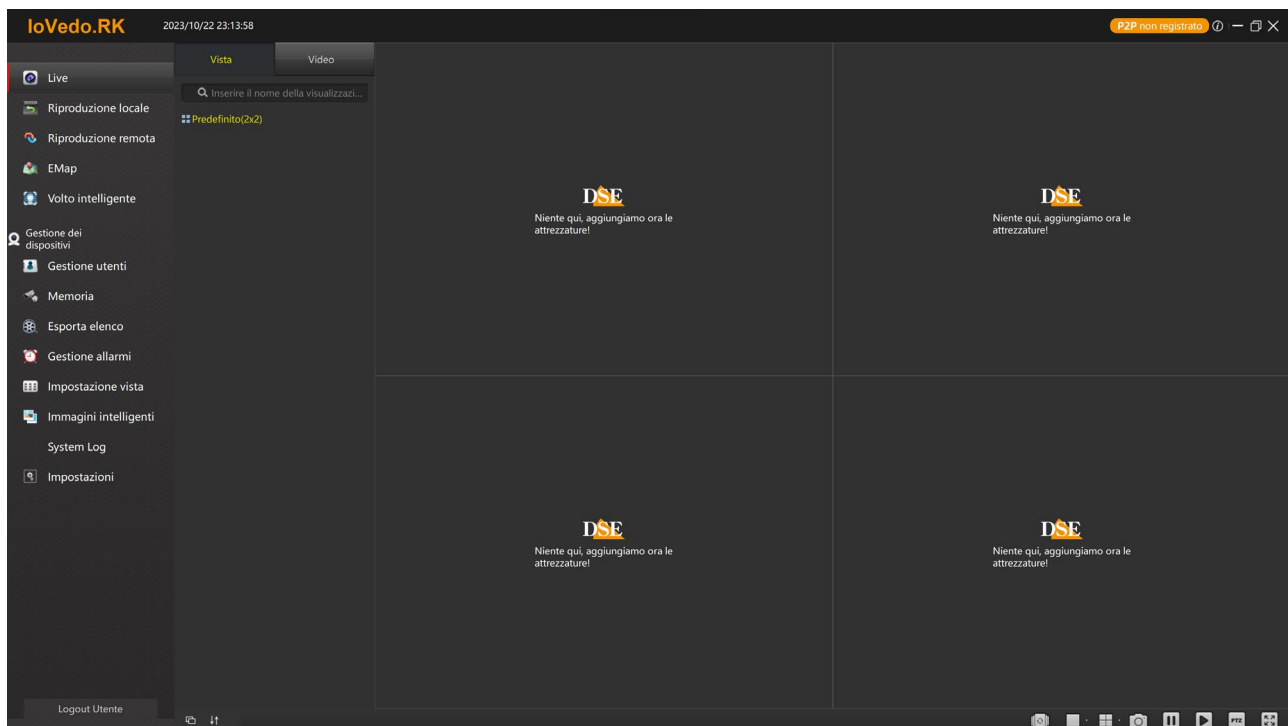
In the left column we find the program control panel, in the center the list of NVRs and the cameras inserted into the system and on the right side there are the viewing windows of the various cameras. To see a camera in the list just drag with the pointer mouse the serial or IP address of the camera until the preferred viewing window.

## Link to IoVedo.RK APP

If you are using our IoVedo.RK mobile app you will have created an account and uploaded it equipment to control them from your mobile phone.

If you want, you can use the IoVedo.RK software to access your app P2P account and manage your equipment that you have loaded into the app with your personal computer. This is the simplest way to use the software because you will not need to load devices into the software.

To connect the IoVedo.RK software to your IoVedo.RK app you need to use the orange button above on the right and enter your server access credentials, the same ones you used to register in the IoVedo.RK app on your mobile phone.



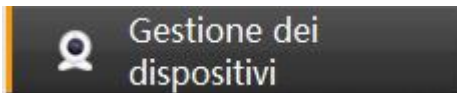
If you enter the correct credentials the button will indicate that the P2P server is connected and you can directly manage all the devices you normally use with the mobile app.

## Connection of cameras in LAN

With the IoVedo.RK software you can control the cameras connected on your local network directly, without passing through our cloud server. If you need to check the devices on your internal LAN you can add them by searching the network. Before doing this make sure have configured an IP address in the cameras that is consistent with that of the computer, i.e. with the same address class (e.g. 192.168.1.XXX) and the same subnet mask (e.g. 255.255.255.0).

This operation is carried out using the SEARCHTOOL program (see manual camera for use).

The IoVedo.RK software is equipped with an automatic search function for network cameras which makes the connection between software and cameras very quick. To access you must press the DEVICE MANAGEMENT button.



The program will open a screen with two tables.

The screenshot shows the IoVedo.RK software interface. The top bar displays the application name, the date and time (2020/04/07 17:04:59), and window control icons. A sidebar on the left contains navigation options: Live, Riproduzione locale, Riproduzione remota, EMap, Volto intelligente, Gestione dei dispositivi (selected), Gestione utenti, Memoria, Esporta elenco, Gestione allarmi, Impostazione vista, Immagini intelligenti, and Impostazioni. A Logout Utente button is at the bottom of the sidebar.

The main content area is divided into two sections:

- Dispositivi aggiunti** (Dispositivi:2, Selezionati:0, Canali totali:13):

Nome del dispositivo	Protocollo	Indirizzo IP	Porta
192.168.2.70	HeroSpeed,NVR	192.168.2.70	80
8701458271031	HeroSpeed,P2P NVR/XVR	P2P EC MANAGER	0

Buttons: Aggiungi, Modifica, Elimina, Configurazione
- Dispositivi online** (Dispositivi:5, Selezionati:0, Canali totali:23):

Nome del dispositivo	Protocollo	Indirizzo IP	Porta	È aggiu...	Mac	Ve...
NVR	HeroSpeed,NVR	192.168.2.88	80	No	00:00:1B:02:EE:53	NV...
NVR	HeroSpeed,NVR	192.168.2.34	80	No	00:00:1B:0A:35:4C	NV...
IPC	HeroSpeed,IPC	192.168.2.169	80	No	00:00:1B:07:93:BB	35...
192.168.2.210	Onvicf,IPC	192.168.2.204	80	No		
IPD-E36V0701-BS	Onvicf,IPC	192.168.2.147	8999	No		

Buttons: Aggiungere a, Ricaricare

In the table above we find the devices added to the program, in the one below all the devices premises present on the network.

You can press the RELOAD button in the table below to make the program repeat a quick network screening by listing the IP addresses of the detected cameras or NVRs.

To add a device on the local network to the program you need to operate in the list below Lists the online devices. You need to select the device and press ADD TO, then yes the ADD DEVICES window will open.

rimponi utente e password predefiniti.' Below this, there are two sections: 'Aggiungi dispositivi hardware' and 'Aggiungi dispositivi P2P'. Each section contains a table with columns for device details. In the hardware section, a row is selected with IP 192.168.2.169, port 80, channel 1, and protocol HeroSpeed,IPC. In the P2P section, a row is selected with serial number 'Numero Seriale', channel 1, and protocol P2P IPC. At the bottom right, there are two buttons: 'Passo successivo' (Next step) and 'Annulla' (Cancel)." data-bbox="91 287 896 655"/>

Aggiungi dispositivi

Digita gli indirizzi IP

Inserisci gli indirizzi IP del dispositivo che vuoi aggiungere al tuo sistema. Potrai velocizzare il processo di scansione selezionando il protocollo appropriato dei dispositivi. Utilizzeremo principalmente la tua password e il tuo nome utente per connetterci, ma se non li inserirai, proveremo a utilizzare l'impostazione predefinita. [rimponi utente e password predefiniti](#).

Aggiungi dispositivi hardware

IP	Porta	Utente	Password	Numero Canale	Protocollo	Stato
<input checked="" type="checkbox"/> 192.168.2.169	80			1	HeroSpeed,IPC	

Aggiungi dispositivi P2P

Numero Seriale	Utente	Password	Numero Canale	Protocollo	Stato
<input checked="" type="checkbox"/> Numero Seriale			1	P2P IPC	

Passo successivo Annulla

The selected address will appear in the ADD HARDWARE DEVICES table above allows the addition of a local device through the IP address, then we can proceed to enter the missing data of the device to be connected. Under the PORT heading we will insert the onvif port used, 80 in our RK cameras; in USER and PASSWORD the device credentials; in CHANNEL NUMBER how many total channels the NVR has, choose 1 if it is a camera; in PROTOCOL select the device you are connecting (IPC if it is a camera, NVR/DVR if it is a video recorder). Once you have entered the device data, click on NEXT STEP, CONNECTION OK will appear under the STATUS item in the table, then click on ADD to complete the connection of the device.



1 del 1 dispositivo(s) verrà aggiunto al sistema.

Aggiungi Annulla



## Connecting P2P cameras

With IoVedo.RK you can also control RK series devices connected via the web using our P2P server for connection. You can do this by connecting to your mobile app account, like seen above, but if you don't use the app you can also individually charge devices to the software. To connect a remote device via P2P, you need to click on ADD in the top table of the DEVICE MANAGEMENT screen.

IoVedo.RK 2020/04/07 17:04:59

Dispositivi aggiunti ( Dispositivi:2, Selezionati:0, Canali totali:13 )

Nome del dispositivo	Protocollo	Indirizzo IP	Porta
192.168.2.70	HeroSpeed,NVR	192.168.2.70	80
8701458271031	HeroSpeed,P2P NVR/XVR	P2P EC MANAGER	0

Aggiungi Modifica Elimina Configurazione

Dispositivi online ( Dispositivi:5, Selezionati:0, Canali totali:23 )

Nome del dispositivo	Protocollo	Indirizzo IP	Porta	È aggiu...	Mac	Ve...
NVR	HeroSpeed,NVR	192.168.2.88	80	No	00:00:1B:02:EE:53	NV...
NVR	HeroSpeed,NVR	192.168.2.34	80	No	00:00:1B:0A:35:4C	NV...
IPC	HeroSpeed,IPC	192.168.2.169	80	No	00:00:1B:07:93:BB	35...
192.168.2.210	Onvif,IPC	192.168.2.204	80	No		
IPD-E36Y0701-BS	Onvif,IPC	192.168.2.147	8999	No		

Aggiungere a Ricaricare

The usual ADD DEVICES table will open but this time we will use the table below ADD P2P DEVICES. Unlike the local table here we will insert the serial number of device instead of the IP address, while the other data must be entered as already described for local devices.

Aggiungi dispositivi P2P

Numero Seriale	Utente	Password	Numero Canale	Protocollo	Stato
<input type="checkbox"/> 8701458271031	admin	•••••	4	P2P NVR/XVR	▼
<input type="checkbox"/> Numero Seriale			1	P2P IPC	▼

After entering the connection parameters, press NEXT STEP, you must see the green message CONNECTION OK, otherwise check in the device settings, NETWORK/P2P tab, that the server is ONLINE.

Aggiungi dispositivi P2P

Numero Seriale	Utente	Password	Numero Canale	Protocollo	Stato
<input checked="" type="checkbox"/> 8701458271031	admin	•••••	4	P2P NVR/XVR	▼ Collegamento ok
<input type="checkbox"/>			1	P2P IPC	▼

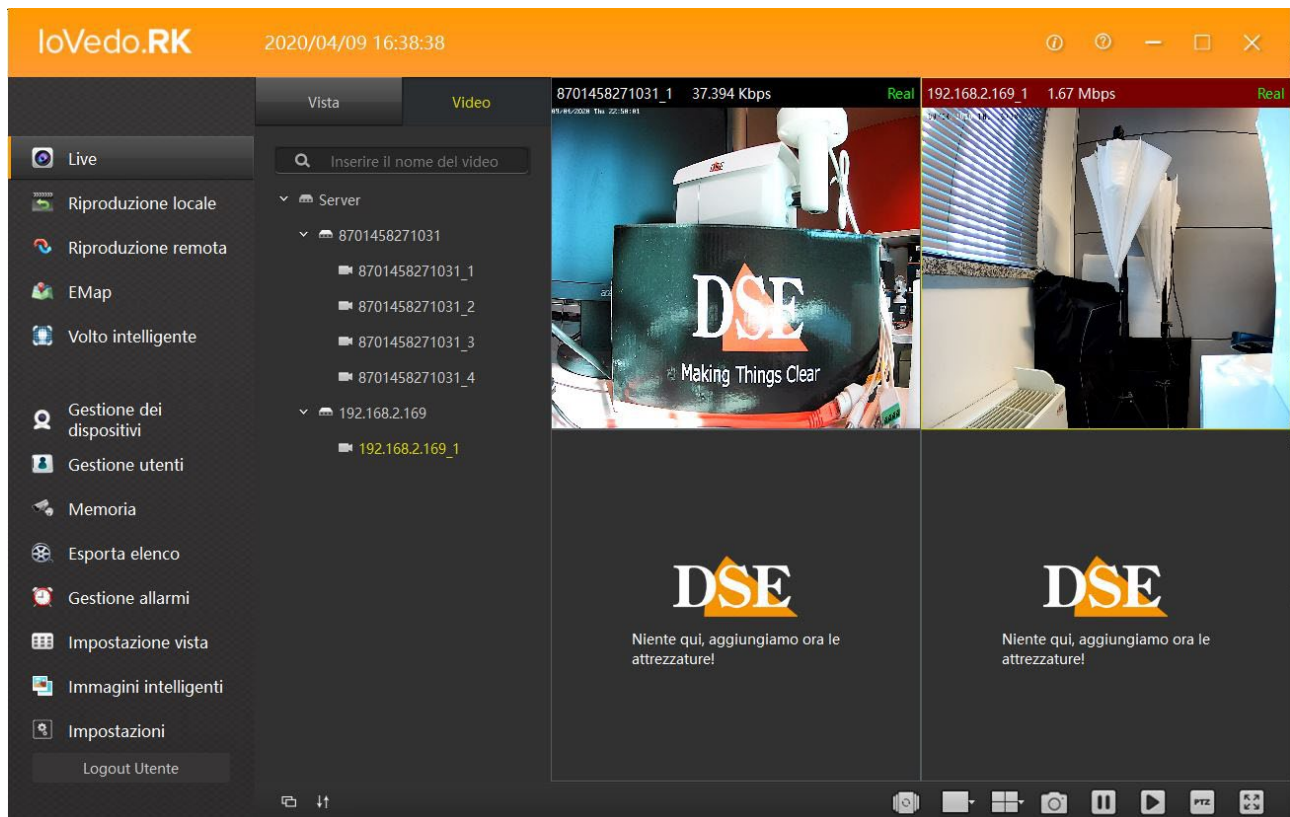
1 del 1 dispositivo(s) verrà aggiunto al sistema.

Press ADD again to finish the operation.

Remember that you can only manage our RK Series cameras and NVRs via the web. It doesn't work with others cameras.

## Live viewing

To see the live cameras you need to enter the LIVE section, then click on SERVER for open the curtain with all devices connected. If the device is a DVR/NVR doing double click opens the list of cameras it manages. Click on the camera you want to see and drag it with the mouse into one of the viewing windows on the right.



## SCREEN SPLITTING AND LAYOUT

The IoVedo.RK program allows you to simultaneously display up to 36 on the screen cameras simultaneously. With the buttons below the screen you can split the monitor in the most appropriate way.



With the first button on the left you can start the cyclic scanning of multiple cameras (to be set in VIEW as we will see later), the second button is used to do a digital zoom on the image the last button allows you to choose how many cameras to see at the same time.

### LIVE COMMANDS

To the right of the split screen buttons we find some view and play buttons quick choice



You can take a screenshot, disable the cameras display, reactivate the viewing cameras and controlling motorized cameras through PTZ control

### FULL SCREEN

The button at the bottom right allows you to bring the camera area to full screen, hiding the frame with the commands, click with the right mouse button to exit full screen

### LIVE CONTEXT MENU

Clicking the mouse on the camera pane opens a context menu



From left to right

STOP/START – Stops/starts the camera's video streaming

SNAPSHOT – Save a live photo of the camera

START/STOP RECORDING – Start/stop the recording which will be saved to a PC folder

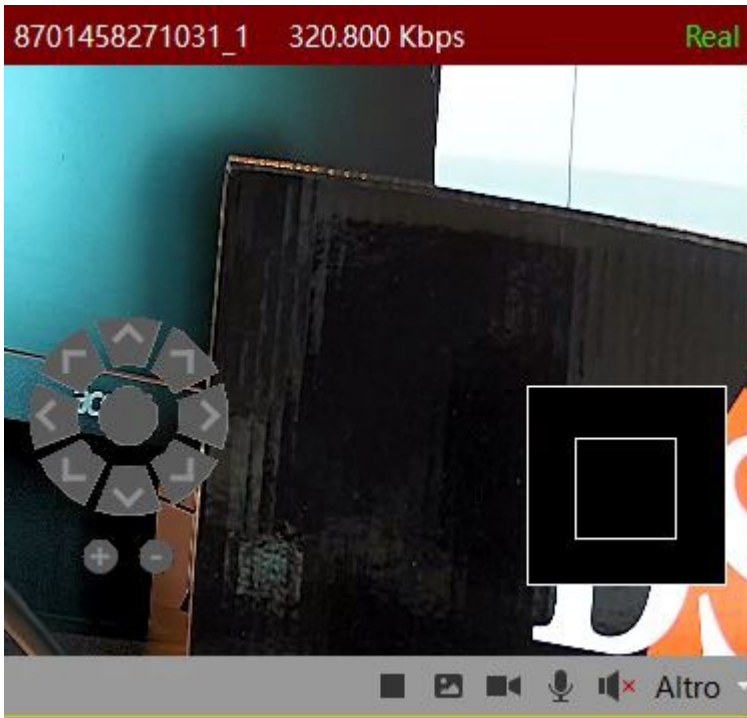
MICROPHONE – Enable/disable audio output if the camera is equipped with a speaker

VOICE – Enable/disable incoming audio if the camera is equipped with a microphone

OTHER – in this section you can choose which stream to receive from the camera (BIT STREAM), and digitally zoom on the image (DIGITAL ZOOM)

### DIGITAL ZOOM

During live viewing you can enlarge a detail by clicking on MORE in the live context menu of the camera, then click on DIGITAL ZOOM.



With the + and - keys under the direction buttons we increase or decrease the zoom, while with the box at the bottom right and the directional keys we move within the image. Then click with right and choose RESTORE TO FACTORY SETTINGS to return to normal viewing. To exit from DIGITAL ZOOM just go to OTHER and remove the flag from DIGITAL ZOOM.

## **PTZ CONTROLS FOR SPEED DOME**

The IoVedo.RK program can control motorized speed dome cameras installed on RK series systems. To control the motorized cameras, click on PTZ in the buttons quick choice positioned at the bottom.



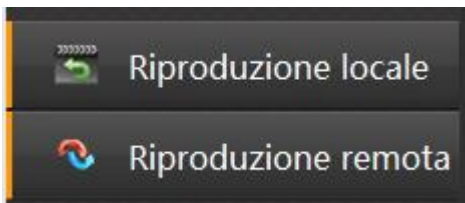
The common movement, zoom, iris and focus commands can be performed directly with i screen buttons that will appear under the list of devices loaded in the program.




## Playback of movies

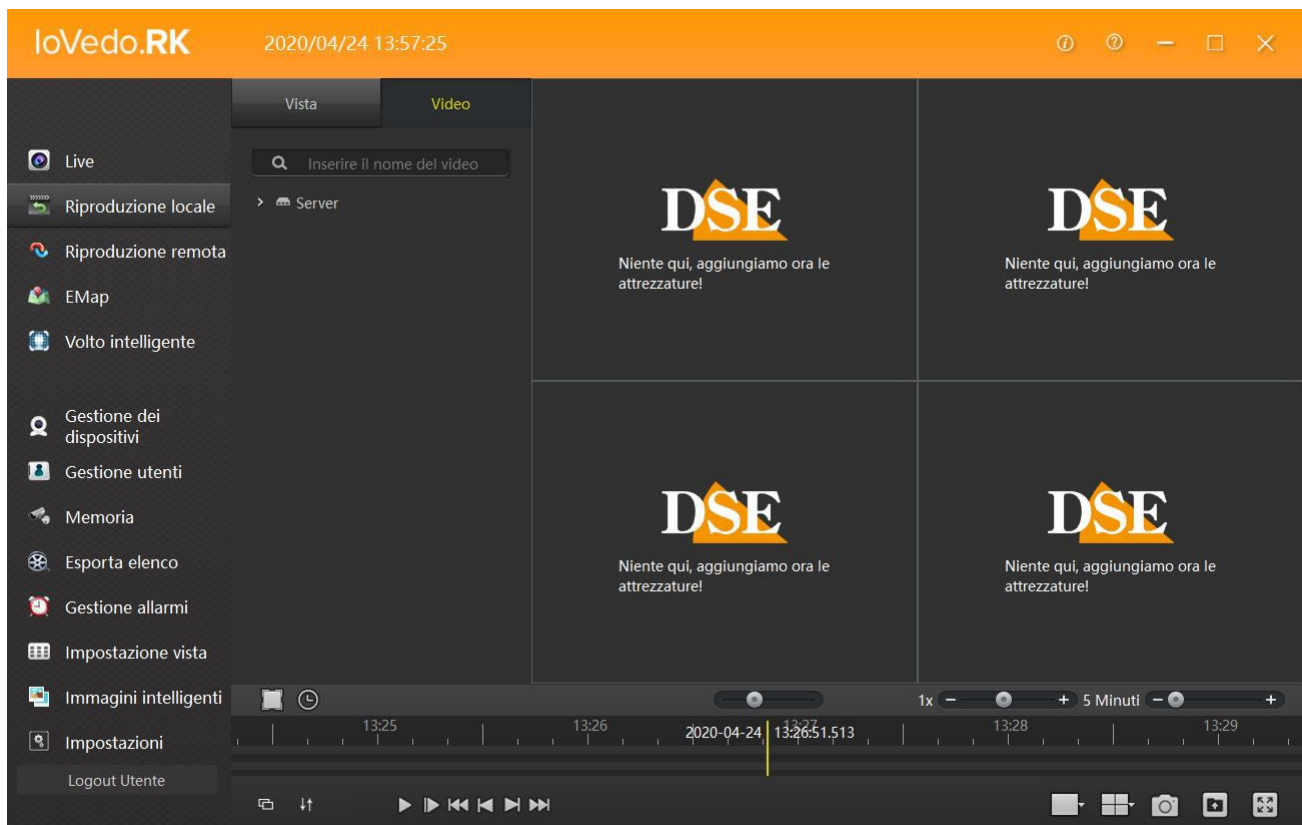
The program does not allow simultaneous playback of videos with active live viewing, therefore if you need to play recorded videos you must stop the live viewing in progress.

With the LOCAL PLAY / REMOTE PLAY buttons you can play the videos sign in.

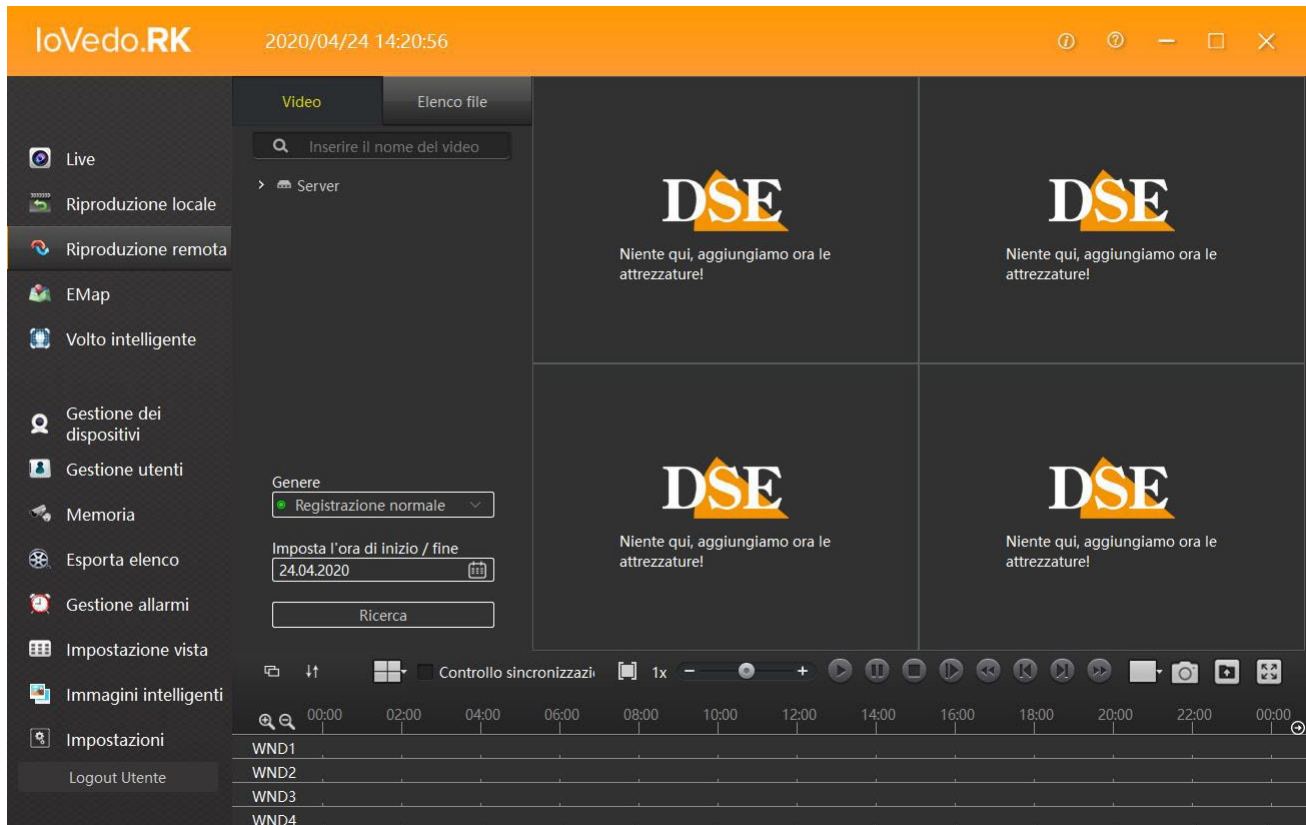


By clicking on LOCAL PLAYBACK you query the PC archive, i.e. the folder destination of recorded files from the camera's live context menu.

With the CLOCK button  the calendar opens to select the date to search for recording, while to search for the time use the scroll bar at the bottom.

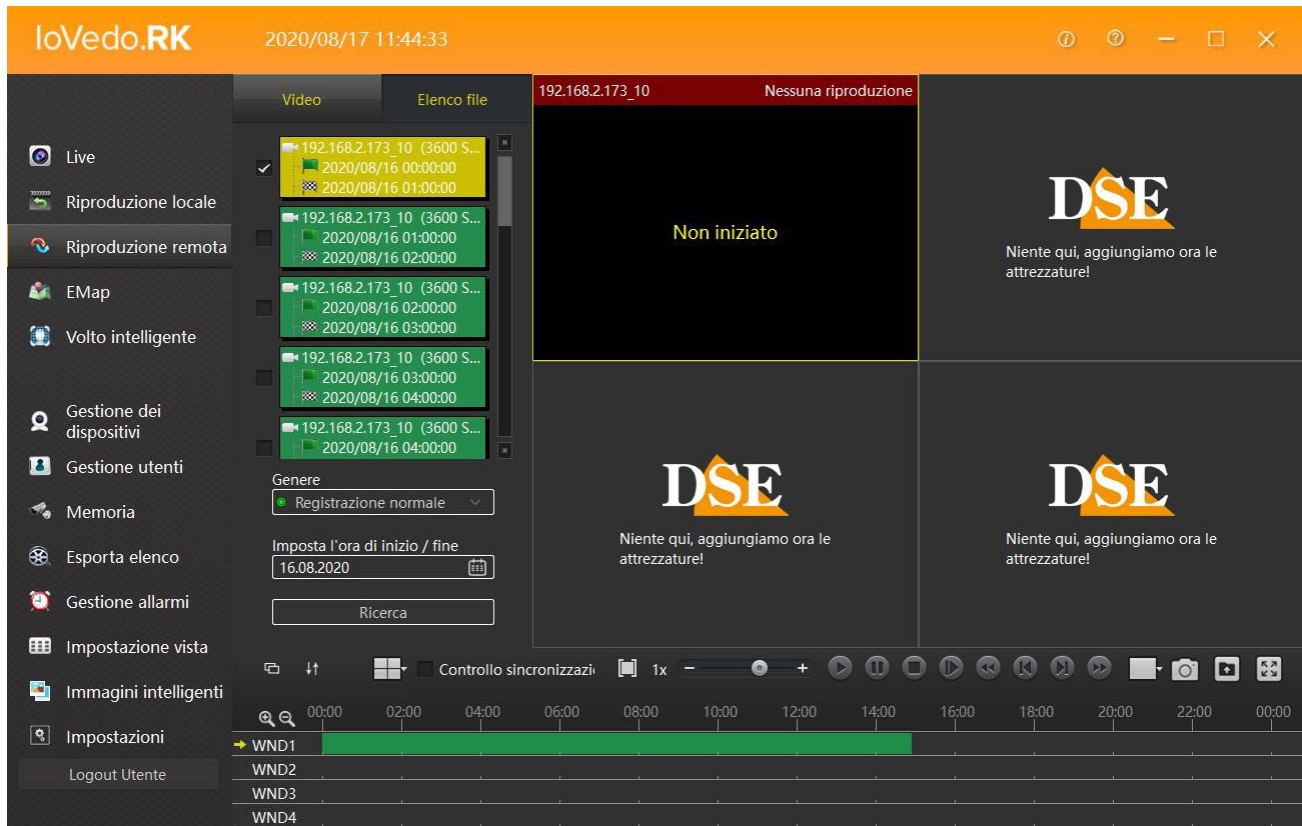


By clicking on REMOTE PLAY you query the hard disk or SD card installed on the device.



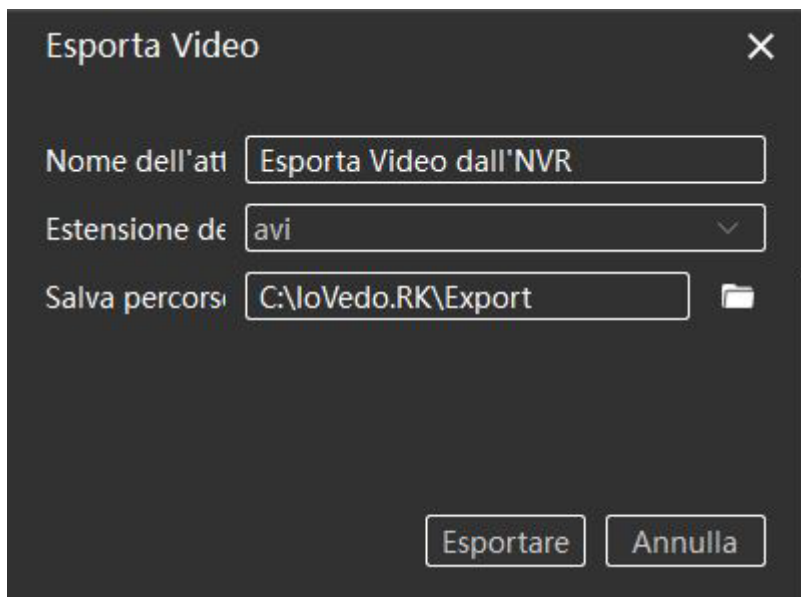
To playback videos, first you need to choose the cameras you want play by dragging the relevant camera onto the viewing screen with the mouse. Once you have chosen the camera you need to choose the type of recording to look for. If you choose NORMAL RECORDING contains continuous recordings, while in ALARM RECORDS you will find the recordings started after an event, alarm (MOTION DETECTION). Once you have chosen the genre, you can search for the desired date from the calendar. Finally, for finding the time, yes use the scroll bar at the bottom. By clicking on FILE LIST we find the list of recorded files ready to be exported (backup).





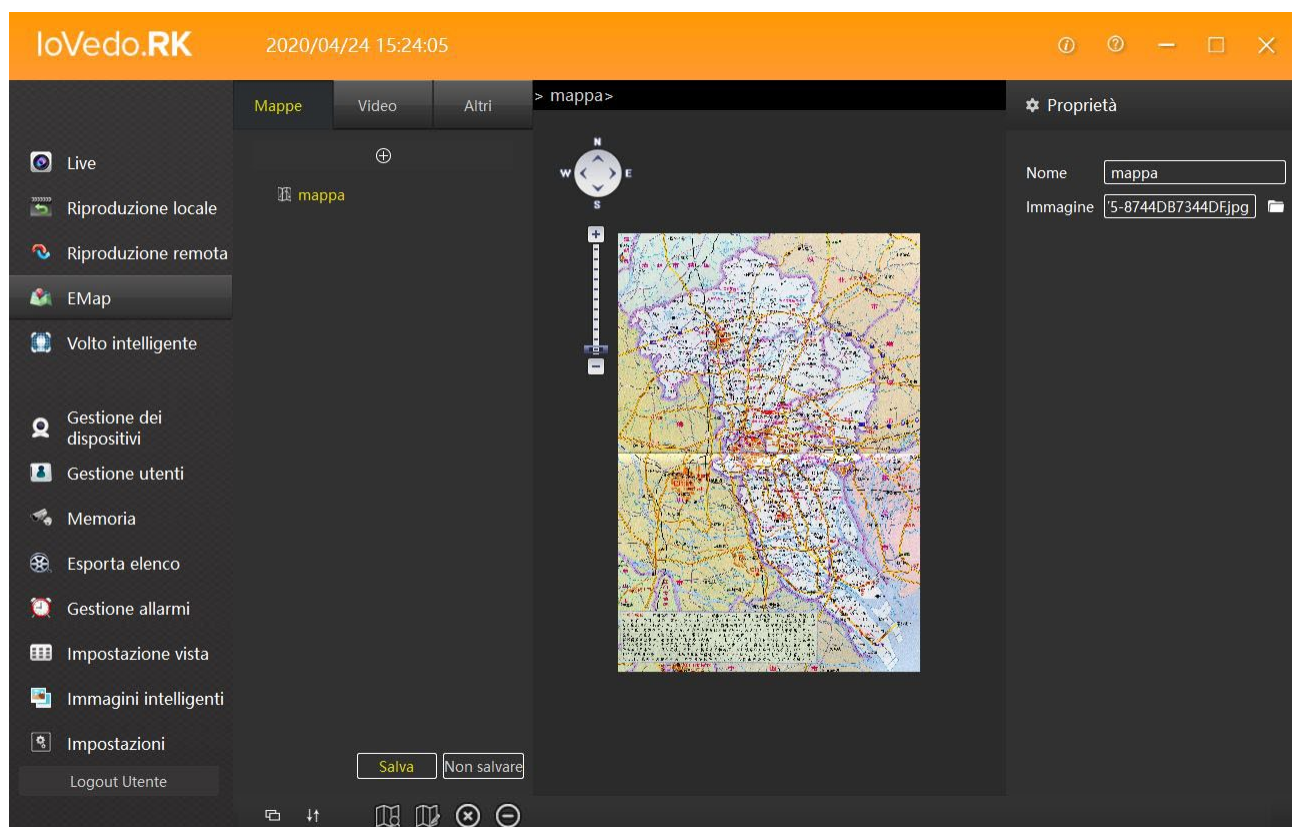
Select the file to export from the list and click on the export file button to the previously chosen directory.

to save the file



## E-map

With the E-map button you can create graphic maps by importing your images customized and placing the camera icons on them. And a great interface for a overseer monitoring a large site.



## Intelligent face

---

With the INTELLIGENT FACE button you enter the settings of the alarms generated by the HUMAN DETECTION, function explained in the manual of the RK series IP cameras with human detection.

## Device management

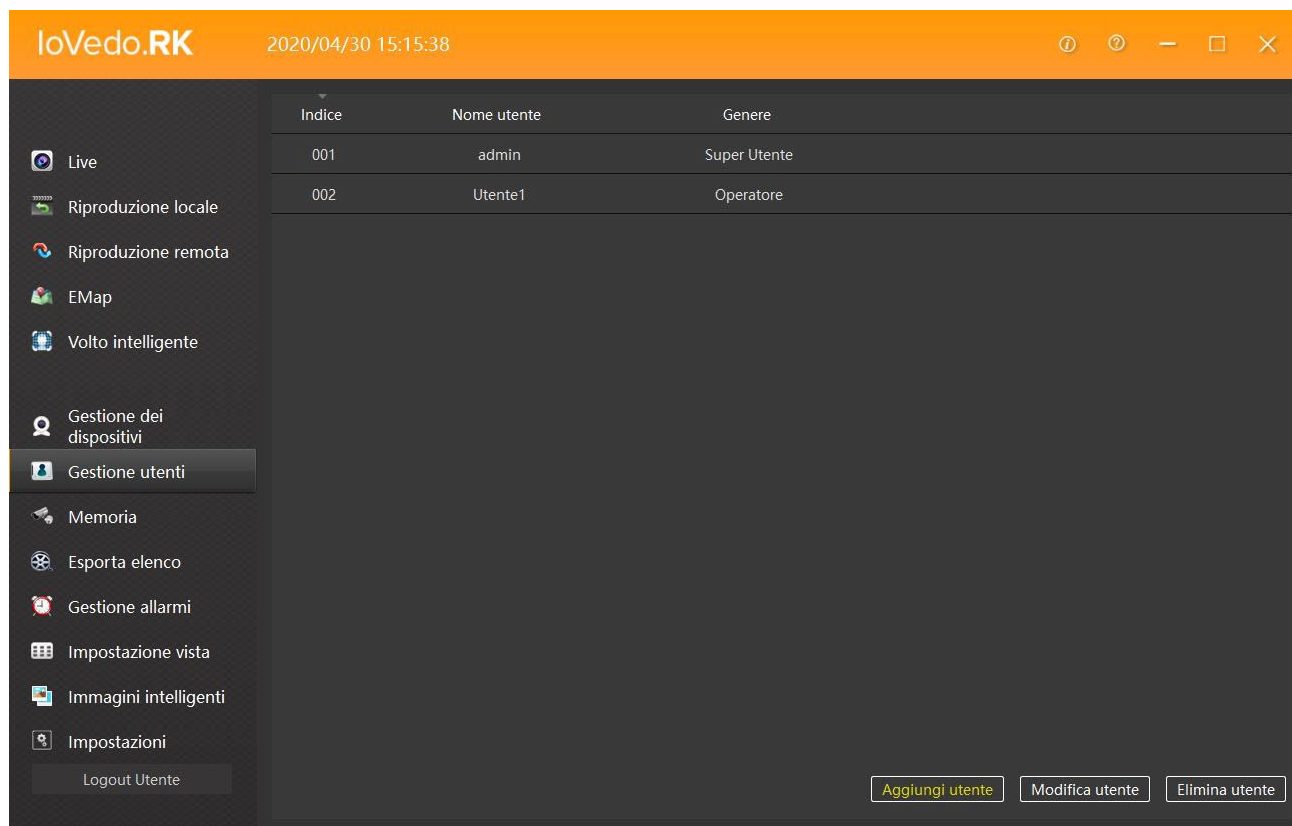
---

With the DEVICE MANAGEMENT button you enter the screen previously seen used to manage the devices present in the system.

## User Management

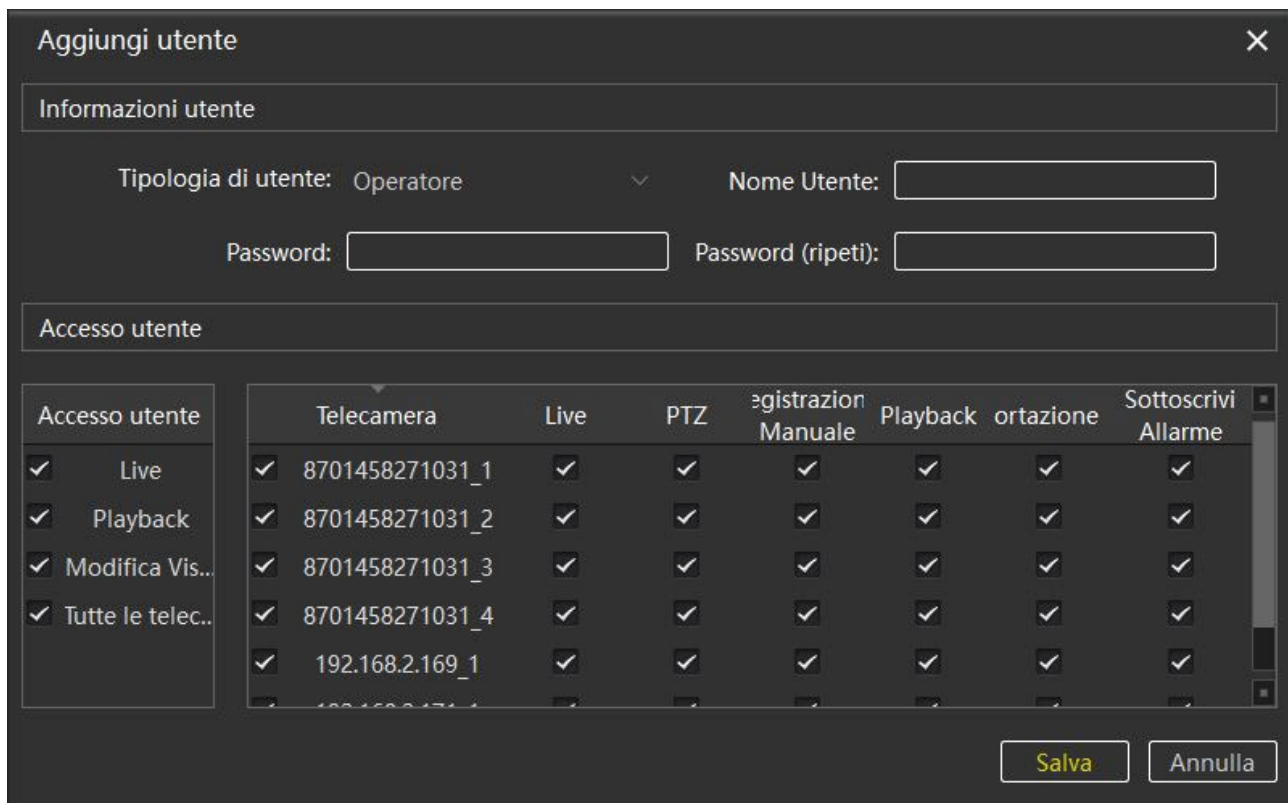
---

With the USER MANAGEMENT button you can create new users who will be able to access the program, each with a custom permission level. For each user you can authorize channels and software functions.



In the photo above we have the example of an administrator (admin) and a simple user (User1). With the buttons at the bottom right you can add a user (ADD USER), modify a user (EDIT USER) or delete a user (DELETE USER).

To add a new user click on ADD USER.



Accesso utente	Telecamera	Live	PTZ	Registrazione Manuale	Playback	Autorizzazione	Sottoscrivi Allarme
<input checked="" type="checkbox"/> Live	<input checked="" type="checkbox"/> 8701458271031_1	<input checked="" type="checkbox"/>	<input checked="" type="checkbox"/>	<input checked="" type="checkbox"/>	<input checked="" type="checkbox"/>	<input checked="" type="checkbox"/>	<input checked="" type="checkbox"/>
<input checked="" type="checkbox"/> Playback	<input checked="" type="checkbox"/> 8701458271031_2	<input checked="" type="checkbox"/>	<input checked="" type="checkbox"/>	<input checked="" type="checkbox"/>	<input checked="" type="checkbox"/>	<input checked="" type="checkbox"/>	<input checked="" type="checkbox"/>
<input checked="" type="checkbox"/> Modifica Vis...	<input checked="" type="checkbox"/> 8701458271031_3	<input checked="" type="checkbox"/>	<input checked="" type="checkbox"/>	<input checked="" type="checkbox"/>	<input checked="" type="checkbox"/>	<input checked="" type="checkbox"/>	<input checked="" type="checkbox"/>
<input checked="" type="checkbox"/> Tutte le telec...	<input checked="" type="checkbox"/> 8701458271031_4	<input checked="" type="checkbox"/>	<input checked="" type="checkbox"/>	<input checked="" type="checkbox"/>	<input checked="" type="checkbox"/>	<input checked="" type="checkbox"/>	<input checked="" type="checkbox"/>
	<input checked="" type="checkbox"/> 192.168.2.169_1	<input checked="" type="checkbox"/>	<input checked="" type="checkbox"/>	<input checked="" type="checkbox"/>	<input checked="" type="checkbox"/>	<input checked="" type="checkbox"/>	<input checked="" type="checkbox"/>

In the screen that appears, you must first enter the USER INFORMATION:

TYPE OF USER – You choose whether to insert an ADMINISTRATOR or an OPERATOR (user simple)

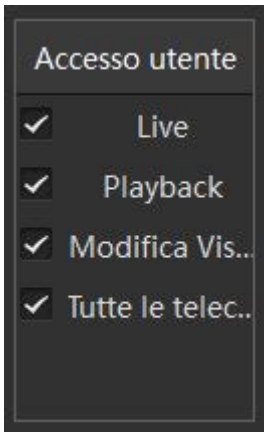
USERNAME – Enter an identifying name of the user to be created

PASSWORD – Enter the password that the new user will have to use to access the plan

PASSWORD (REPEAT) – Re-enter the password created to avoid typing errors at the moment of password creation

Once you have entered the USER INFORMATION you can proceed to enter the authorizations for the new user in USER ACCESS. The flag indicates that the authorization is active.

By acting on the buttons on the left screen (USER ACCESS) you activate the authorizations for live viewing (LIVE), for playing recorded videos (PLAYBACK) and for editing of the screen display (CHANGE VIEW..) of all the devices present in the system.



On the right screen we set the permissions on each individual camera present in the system. The user can be authorized for live viewing (LIVE) and PTZ commands for cameras motorized (PTZ), the recording settings (MANUAL RECORDING), the playback of recorded movies (PLAYBACK), backup of recorded files (EXPORT) or to alarm management (SUBSCRIBE ALARM).

Telecamera	Live	PTZ	Registrazione Manuale	Playback	Esportazione	Sottoscrivi Allarme
<input checked="" type="checkbox"/> 8701458271031_1	<input checked="" type="checkbox"/>	<input checked="" type="checkbox"/>	<input checked="" type="checkbox"/>	<input checked="" type="checkbox"/>	<input checked="" type="checkbox"/>	<input checked="" type="checkbox"/>
<input checked="" type="checkbox"/> 8701458271031_2	<input checked="" type="checkbox"/>	<input checked="" type="checkbox"/>	<input checked="" type="checkbox"/>	<input checked="" type="checkbox"/>	<input checked="" type="checkbox"/>	<input checked="" type="checkbox"/>
<input checked="" type="checkbox"/> 8701458271031_3	<input checked="" type="checkbox"/>	<input checked="" type="checkbox"/>	<input checked="" type="checkbox"/>	<input checked="" type="checkbox"/>	<input checked="" type="checkbox"/>	<input checked="" type="checkbox"/>
<input checked="" type="checkbox"/> 8701458271031_4	<input checked="" type="checkbox"/>	<input checked="" type="checkbox"/>	<input checked="" type="checkbox"/>	<input checked="" type="checkbox"/>	<input checked="" type="checkbox"/>	<input checked="" type="checkbox"/>
<input checked="" type="checkbox"/> 192.168.2.169_1	<input checked="" type="checkbox"/>	<input checked="" type="checkbox"/>	<input checked="" type="checkbox"/>	<input checked="" type="checkbox"/>	<input checked="" type="checkbox"/>	<input checked="" type="checkbox"/>

Once the settings have been set, save with the SAVE button.

To modify an already created user, click select the user to modify and click EDIT USER. A screen similar to ADD USER will open with the difference that The USER TYPE and USER NAME cannot be changed.

### Modifica utente

#### Informazioni utente

Tipologia di utente:  Nome Utente:

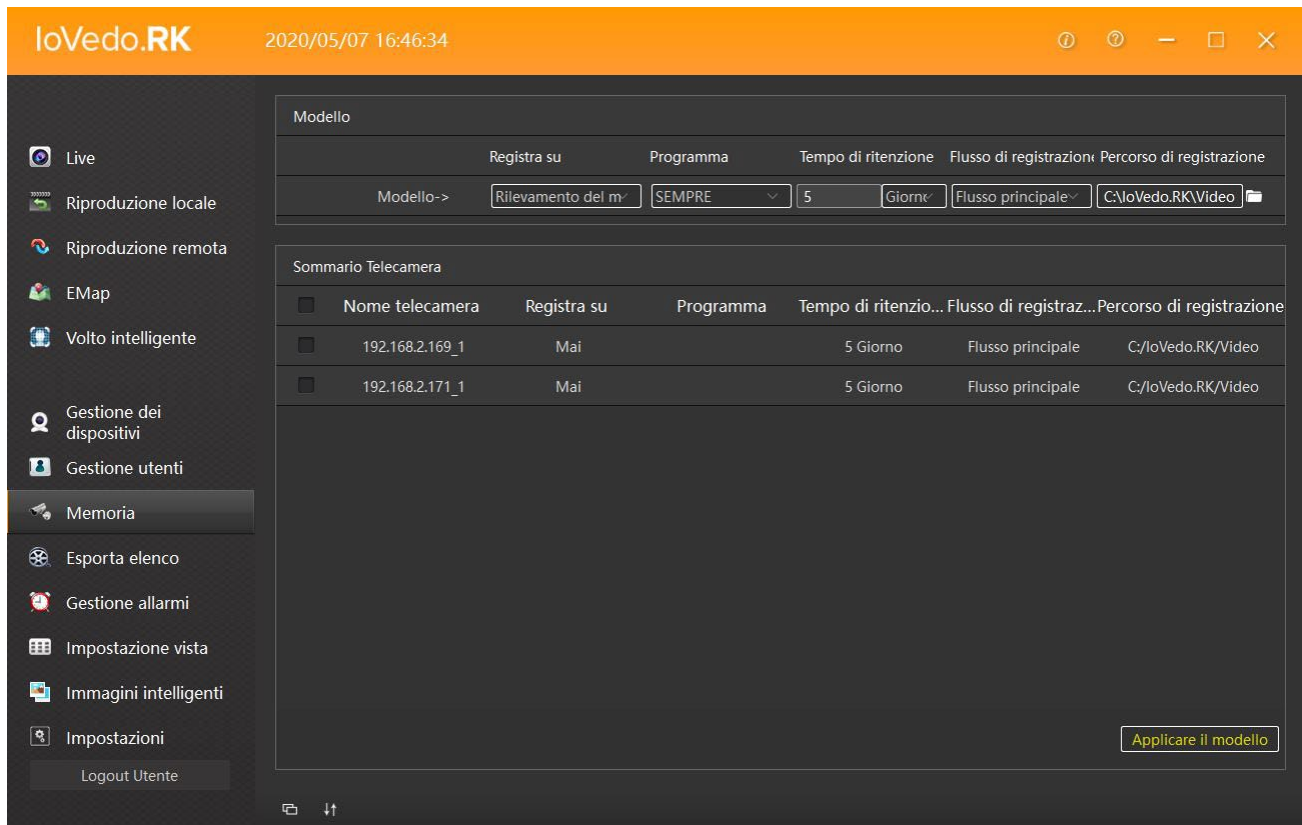
Password:  Password (ripeti):

#### Accesso utente

Accesso utente	Telecamera	Live	PTZ	registrazion Manuale	Playback	ortazione	Sottoscrivi Allarme
<input checked="" type="checkbox"/> Live	<input checked="" type="checkbox"/> 8701458271031_1	<input checked="" type="checkbox"/>	<input checked="" type="checkbox"/>	<input checked="" type="checkbox"/>	<input checked="" type="checkbox"/>	<input checked="" type="checkbox"/>	<input checked="" type="checkbox"/>
<input checked="" type="checkbox"/> Playback	<input checked="" type="checkbox"/> 8701458271031_2	<input checked="" type="checkbox"/>	<input checked="" type="checkbox"/>	<input checked="" type="checkbox"/>	<input checked="" type="checkbox"/>	<input checked="" type="checkbox"/>	<input checked="" type="checkbox"/>
<input checked="" type="checkbox"/> Modifica Vis...	<input checked="" type="checkbox"/> 8701458271031_3	<input checked="" type="checkbox"/>	<input checked="" type="checkbox"/>	<input checked="" type="checkbox"/>	<input checked="" type="checkbox"/>	<input checked="" type="checkbox"/>	<input checked="" type="checkbox"/>
<input checked="" type="checkbox"/> Tutte le telec..	<input checked="" type="checkbox"/> 8701458271031_4	<input checked="" type="checkbox"/>	<input checked="" type="checkbox"/>	<input checked="" type="checkbox"/>	<input checked="" type="checkbox"/>	<input checked="" type="checkbox"/>	<input checked="" type="checkbox"/>
	<input checked="" type="checkbox"/> 192.168.2.169_1	<input checked="" type="checkbox"/>	<input checked="" type="checkbox"/>	<input checked="" type="checkbox"/>	<input checked="" type="checkbox"/>	<input checked="" type="checkbox"/>	<input checked="" type="checkbox"/>

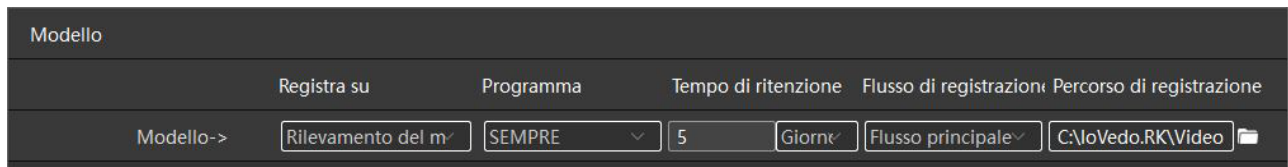
With the DELETE USER button you delete the selected user.

# Memory



With the MEMORY button you access the recording settings on the PC's hard disk where it is located installed the program.

The screen is made up of two parts, the top section (MODEL) is used to indicate the mode recording folder and the destination folder of the recorded files.



The bottom part (CAMERA SUMMARY) lists the devices present in the system from select and set the recording settings.

Once you have set the settings and selected the device, click on APPLY THE TEMPLATE to save.

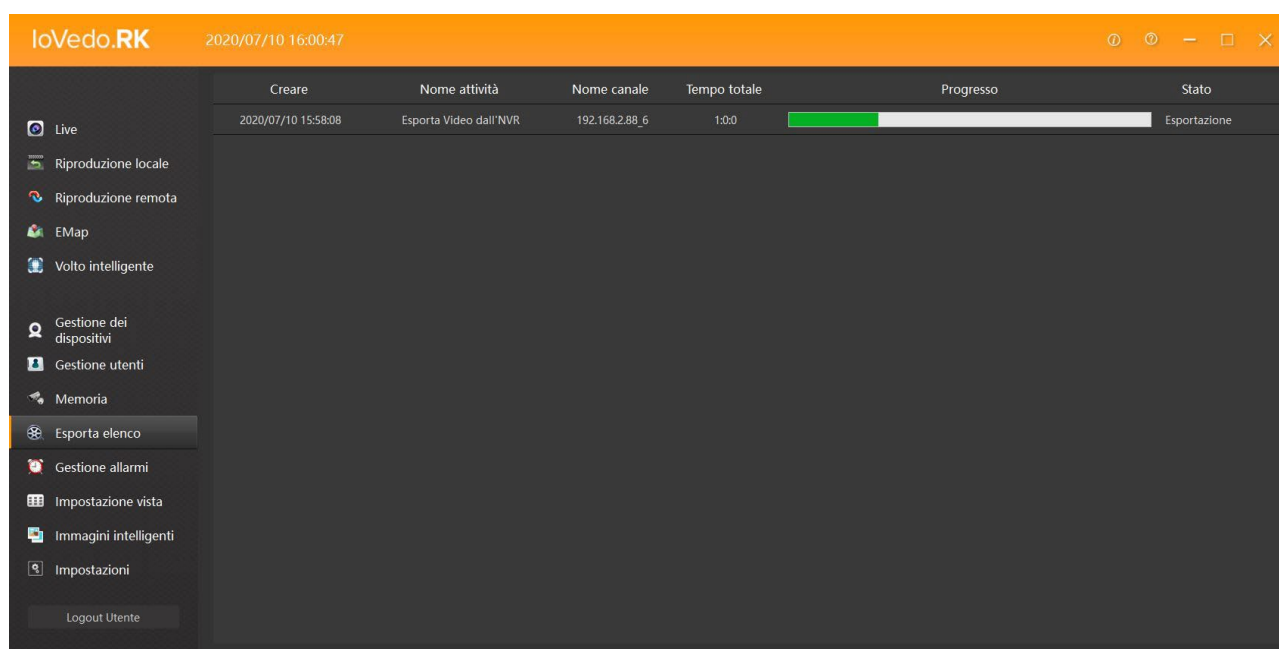


Sommaro Telecamera						
<input type="checkbox"/>	Nome telecamera	Registra su	Programma	Tempo di ritenzio...	Flusso di registraz...	Percorso di registrazione
<input type="checkbox"/>	192.168.2.169_1	Mai		5 Giorno	Flusso principale	C:/IoVedo.RK/Video
<input type="checkbox"/>	192.168.2.171_1	Mai		5 Giorno	Flusso principale	C:/IoVedo.RK/Video

[Applicare il modello](#)

## Export List

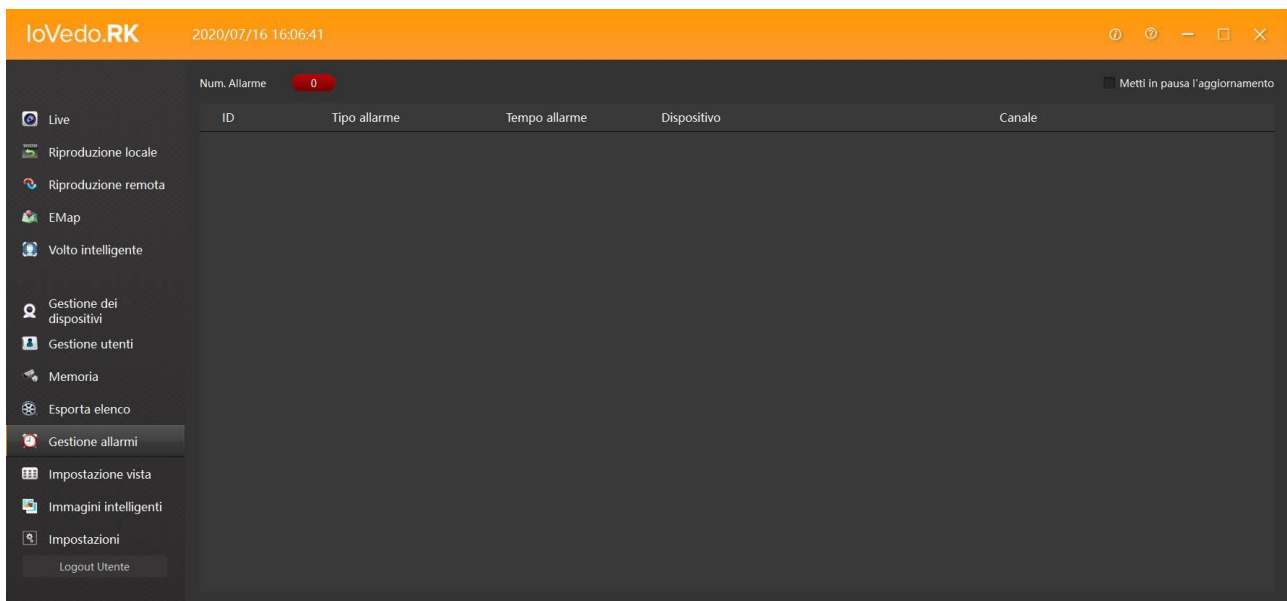
On this screen we find the list of exported (backup) files.



Creare	Nome attività	Nome canale	Tempo totale	Progresso	Stato
2020/07/10 15:58:08	Esporta Video dall'NVR	192.168.2.88_6	1:00	<div style="width: 100%;"><div style="width: 100%;"></div></div>	Esportazione

The table is made up of six columns which indicate: the file being downloaded, the action performed from the system, the name of the affected device, the total download time, the completion and status of the action.

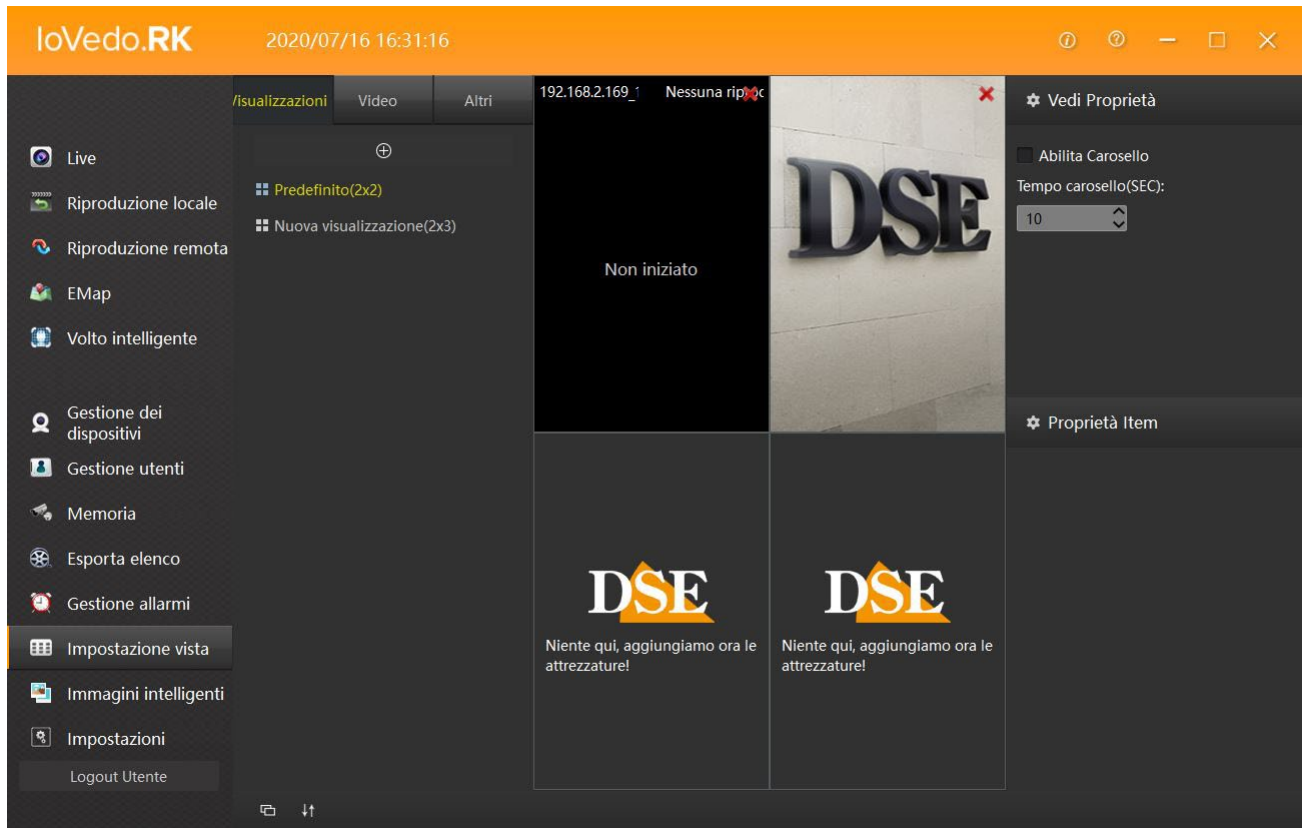
## Alarm Management



Clicking on ALARM MANAGEMENT opens the list of all the alarms generated by the device.

## View Setting

On VIEW SETTINGS you can set the appearance of the live view of the program. You can set the DEFAULT setting as you wish or insert other views a pleasure, with any number of boxes. Setting up comfortable views is essential to have always have an eye on what you need without having to dial the display every time screen. In the live window at the top there is a VIEW button to easily recall the views you have set.



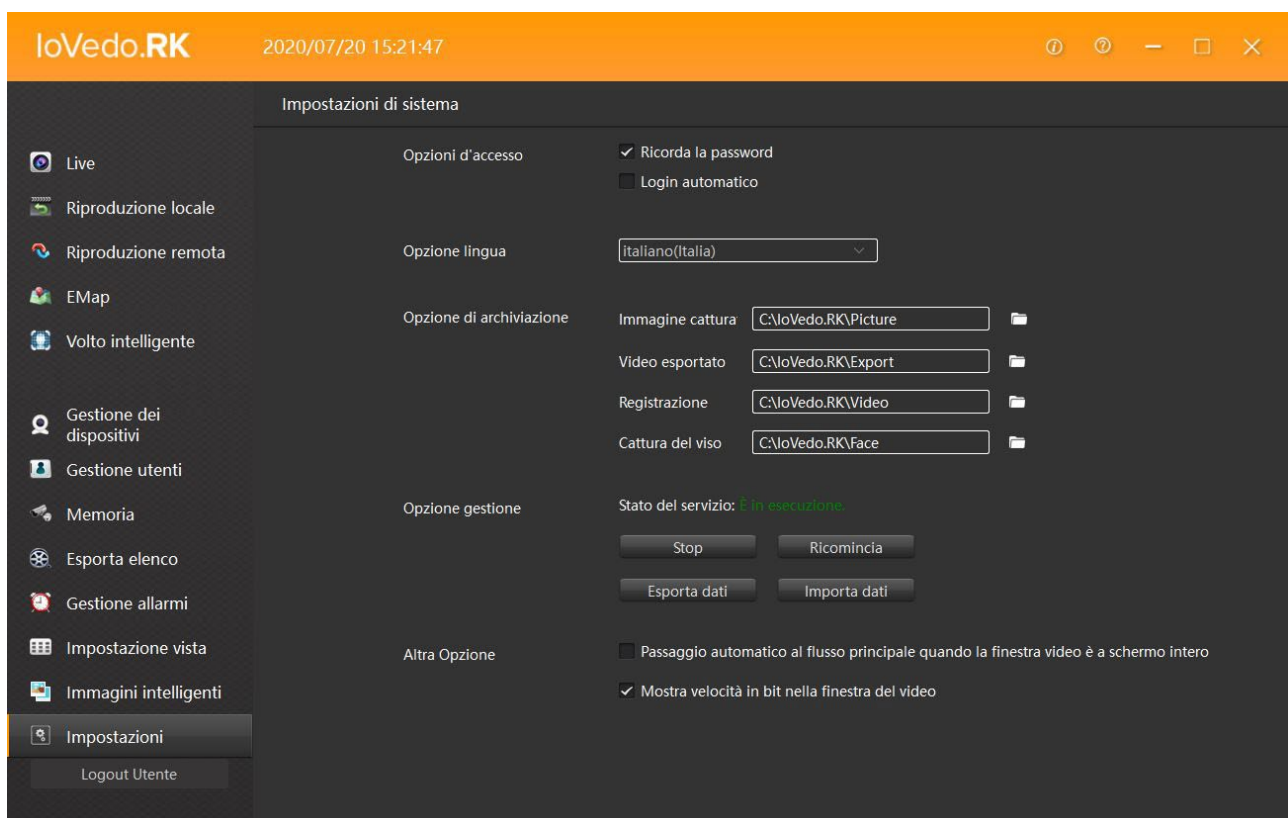
In VIEWS you enter the layouts, the factory default one is there, in VIDEO you choose the device to be displayed by dragging it into the various boxes, finally it can be added in OTHERS in the screens an HTML page, an image chosen from the PC hard disk or a cyclical of cameras shown in sequence (CAROUSEL).

Once the view has been set, click on save to save and then find it again in the live view by clicking on VIEW.

## Intelligent Images

In the INTELLIGENT IMAGES screen you manage the files recorded following alarms generated by the cameras that manage HUMAN DETECTION, a function explained in the manual of IP cameras with human detection.

# Settings



By clicking on SETTINGS you access the system settings where you set the OPTIONS LOGIN (remember password, automatic login); the LANGUAGE OPTION (system language); the STORAGE OPTION (recording destination folders); the OPTION MANAGEMENT (allows you to stop the system, export or import system settings); In the end in OTHER OPTION we can enable automatic switching to the main flow when the video window is full screen or enable the bit rate indicator in the window video.